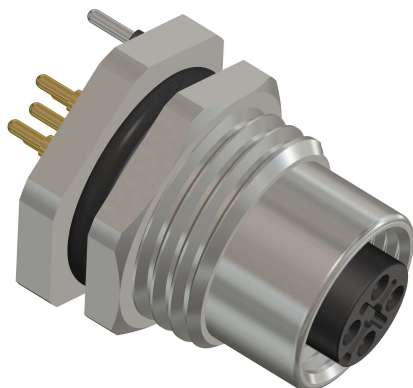


M12 Circular Connector



M12 Female M16 PCB Panel Mount, Rear 5 Pin Connector

Product Image



Product may differ from image.

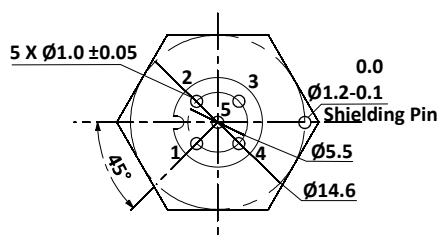
General Specification

Rated Operational Voltage	60 V
Current Rating	4A
Insulation Resistance	$\geq 100 \text{ M}\Omega$
Temperature Range	$-25^{\circ}\text{C} \dots +75^{\circ}\text{C}$
Degree of Protection	IP67
Coding	A-Coded
Mounting	Rear

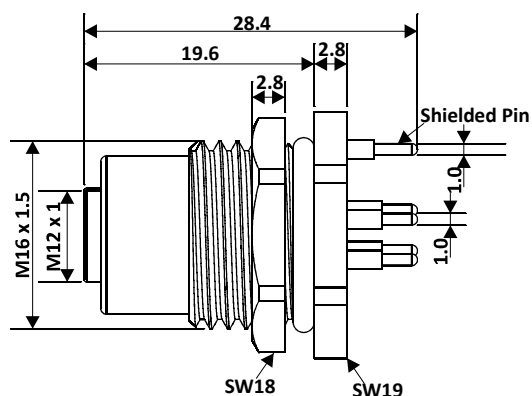
Material Specification

Housing Material	Brass Ni Plated
Contact	Cu-Zn
Contact Plating	Gold Flash
Contact Carrier	Nylon 66
O-Ring	Neoprene
Pole	5
Clamp Nut	M16 X 1.5
Termination	PCB

PCB Layout

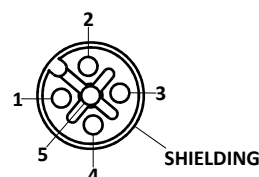


Product Diagram



All dimensions are in mm.

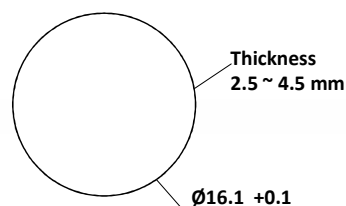
Pin Assignment



Specification & Approval

RoHS	Compliant with Exemption
RoHS exemption	6@: Copper alloy containing up to 4 % lead by weight
REACH SVHC substances	Yes
REACH SVHC substances	CAS 7439-92-1 (Lead)
CE	Yes
Standard	IEC 61076-2-101

Panel Cutout



Ordering Part No.

Part Number-CPF12-RMBR5-SH0

