

M12 Circular Connector



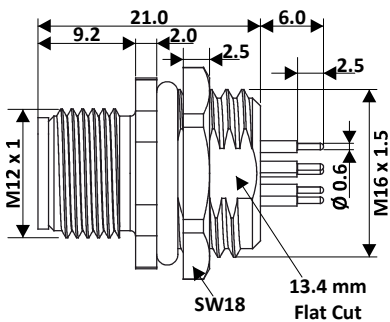
M12 Male M16 PCB Panel Mount, Front 12 Pin Connector

Product Image



Product may differ from image.

Product Diagram

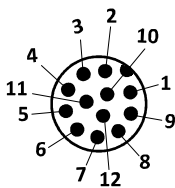


All dimensions are in mm.

General Specification

Rated Operational Voltage	30 V
Current Rating	1.5A
Insulation Resistance	$\geq 100 \text{ M}\Omega$
Temperature Range	$-25^{\circ}\text{C} \dots +75^{\circ}\text{C}$
Degree of Protection	IP67
Coding	A-Coded
Mounting	Front

Pin Assignment



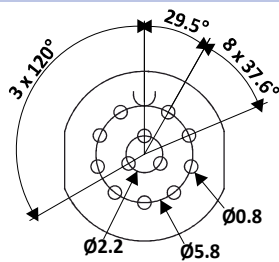
Material Specification

Housing Material	Brass Ni Plated
Contact	Cu-Zn
Contact Plating	Gold Flash
Contact Carrier	Nylon 66
O-Ring	Neoprene
Pole	12
Clamp Nut	M16 X 1.5
Termination	PCB

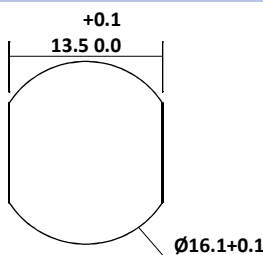
Specification & Approval

RoHS	Compliant with Exemption
RoHS exemption	6@: Copper alloy containing up to 4 % lead by weight
REACH SVHC substances	Yes
REACH SVHC substances	CAS 7439-92-1 (Lead)
CE	Yes
Standard	IEC 61076-2-101

PCB Layout



Panel Cutout



Ordering Part No.

Part Number-CPM12-FMBR12-S0

