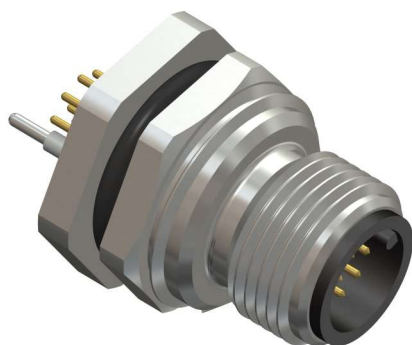


# M12 Circular Connector



## M12 Male M16 PCB Panel Mount, Rear 12 Pin Connector

### Product Image



Product may differ from image.

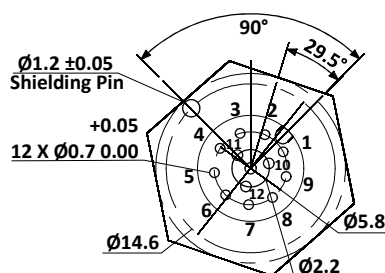
### General Specification

Rated Operational Voltage	30 V
Current Rating	1.5A
Insulation Resistance	$\geq 100 \text{ M}\Omega$
Temperature Range	-25°C ... +75°C
Degree of Protection	IP67
Coding	A-Coded
Mounting	Rear

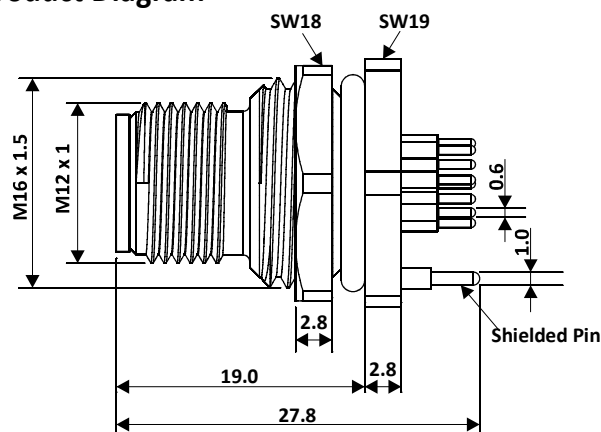
### Material Specification

Housing Material	Brass Ni Plated
Contact	Cu-Zn
Contact Plating	Gold Flash
Contact Carrier	Nylon 66
O-Ring	Neoprene
Pole	12
Clamp Nut	M16 X 1.5
Termination	PCB

### PCB Layout

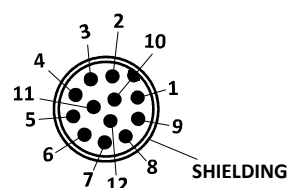


### Product Diagram



All dimensions are in mm.

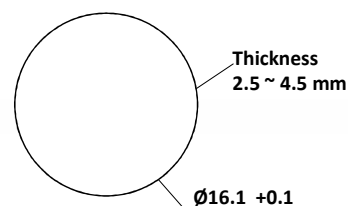
### Pin Assignment



### Specification & Approval

RoHS	Compliant with Exemption
RoHS exemption	6@: Copper alloy containing up to 4 % lead by weight
REACH SVHC substances	Yes
REACH SVHC substances	CAS 7439-92-1 (Lead)
CE	Yes
Standard	IEC 61076-2-101

### Panel Cutout



### Ordering Part No.

Part Number-CPM12-RMBR12-SH0

