

M12 Circular Connector



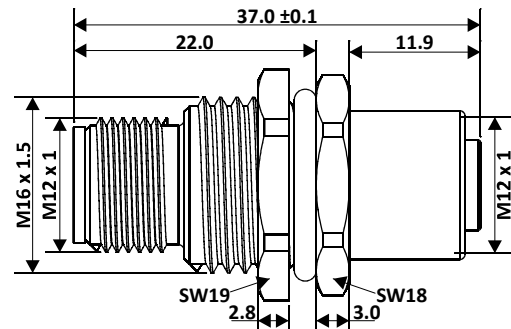
M12 Female to Male 4 Pin Converter Brass Housing

Product Image



Product may differ from image.

Product Diagram



All dimensions are in mm.

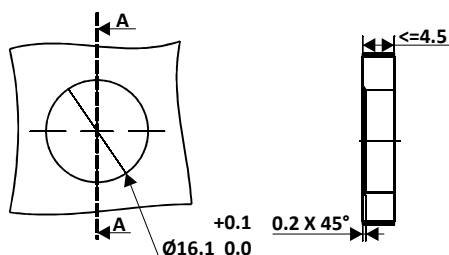
General Specification

Rated Operational Voltage	250 V
Current Rating	4A
Insulation Resistance	>= 100 MΩ
Temperature Range	-25°C ... +75°C
Degree of Protection	IP67
Coding	A-Coded
Mounting	Bipolar/Screw Mounting Rear
Matting Cycles	>100
Coupling	Thread Locking
Shield	Yes

Material Specification

Housing Material	Nickel Plated Brass
Contact	Cu-Zn
Contact Plating	Gold Flash
Contact Carrier	Nylon 66
O-Ring	Neoprene
Pole	4
Coupling Nut	Brass Nickel-Plated

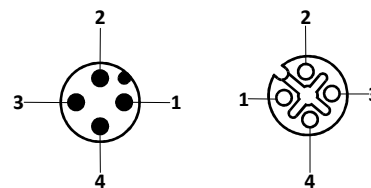
Panel Cutout



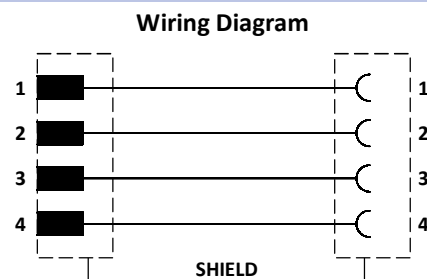
Ordering Part No.

Part Number : CDM12RMBR4-F12BR4

Pin Assignment



Wiring Diagram



Specification & Approval

RoHS	Compliant with Exemption
RoHS exemption	6©: Copper alloy containing up to 4 % lead by weight
REACH SVHC substances	Yes
REACH SVHC substances	CAS 7439-92-1 (Lead)
CE	Yes
Standard	IEC 61076-2-101

