

M12 Circular Connector



M12 Female to Male 5 Pin Converter Brass Housing

Product Image



Product may differ from image.

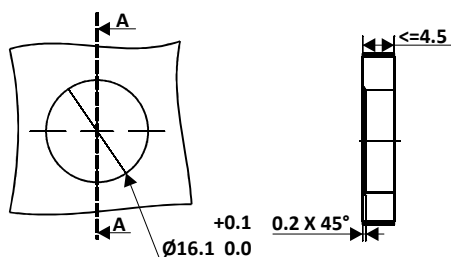
General Specification

Rated Operational Voltage	60 V
Current Rating	4A
Insulation Resistance	$\geq 100 \text{ M}\Omega$
Temperature Range	$-25^{\circ}\text{C} \dots +75^{\circ}\text{C}$
Degree of Protection	IP67
Coding	A-Coded
Mounting	Bipolar/Screw Mounting Rear
Matting Cycles	>100
Coupling	Thread Locking
Shield	Yes

Material Specification

Housing Material	Nickel Plated Brass
Contact	Cu-Zn
Contact Plating	Gold Flash
Contact Carrier	Nylon 66
O-Ring	Neoprene
Pole	5
Coupling Nut	Brass Nickel-Plated

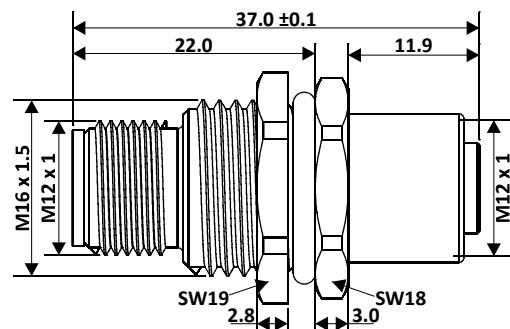
Panel Cutout



Ordering Part No.

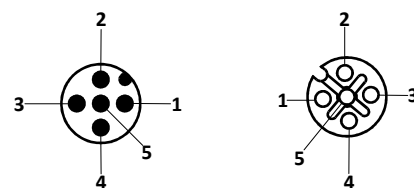
Part Number : CDM12RMBR5-F12BR5

Product Diagram

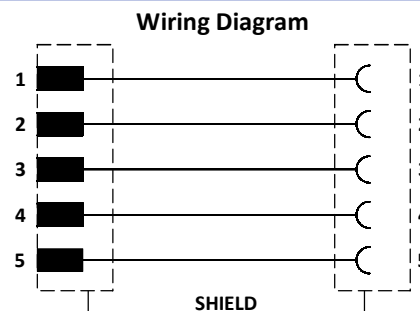


All dimensions are in mm.

Pin Assignment



Wiring Diagram



Specification & Approval

RoHS	Compliant with Exemption
RoHS exemption	6©: Copper alloy containing up to 4 % lead by weight
REACH SVHC substances	Yes
REACH SVHC substances	CAS 7439-92-1 (Lead)
CE	Yes
Standard	IEC 61076-2-101

