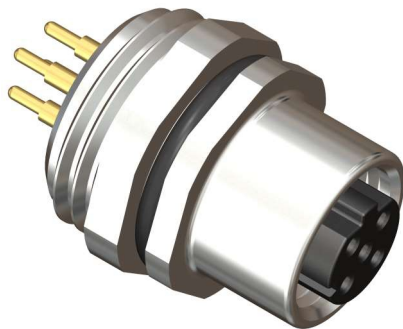


# M12 Circular Connector



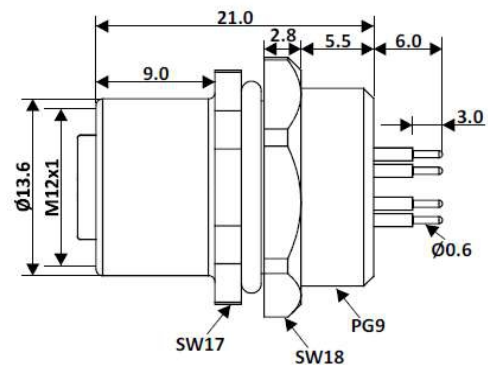
## M12 D-Coded Female 4 Pin Front PCB Mountable Connector

### Product Image



Product may differ from image.

### Product Diagram



All dimensions are in mm.

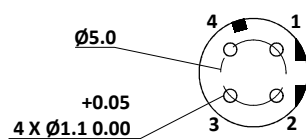
### General Specification

Rated Operational Voltage	250 V
Current Rating	4A
Insulation Resistance	$\geq 100 \text{ M}\Omega$
Temperature Range	$-25^{\circ}\text{C} \dots +75^{\circ}\text{C}$
Degree of Protection	IP67
Coding	D-Coded
Mounting	Front

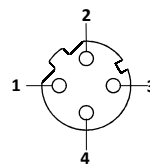
### Material Specification

Housing Material	Brass Ni Plated
Contact	Cu-Zn
Contact Plating	Gold Flash
Contact Carrier	Nylon 66
O-Ring	Neoprene
Pole	4
Clamp Nut	PG9
Termination	Solderable Pins

### PCB Layout



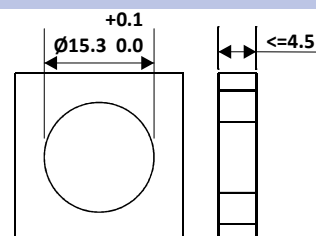
### Pin Assignment



### Specification & Approval

RoHS	Compliant with Exemption
RoHS exemption	6©: Copper alloy containing up to 4 % lead by weight
REACH SVHC substances	Yes
REACH SVHC substances	CAS 7439-92-1 (Lead)
CE	Yes
Standard	IEC 61076-2-101

### Panel Cutout



### Ordering Part No.

Part Number : CPF12-FPBR4-S0-D